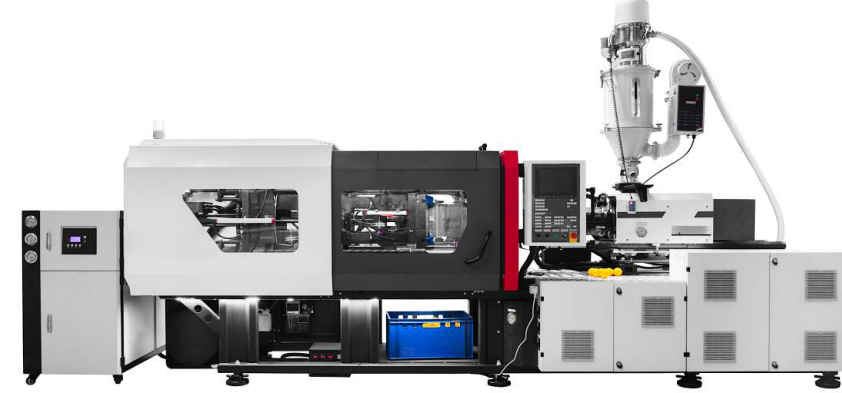




Your **Partner**
for
Shotgun
Parts

Wencester Silah Savunma Sanayi İç ve Dış Tic. Ltd. Şti .
Wencester Weapon Defense Industry Import and Export Trade Co. Ltd.
Üzümlü Mah. 44842. Sok. No 4/1
42700 Beyşehir, Konya / Türkiye
+90 545 391 54 03
wencestersilah@gmail.com **wencester.com.tr**



PRODUCT
PORTFOLIO
wencester.com.tr



WENCESTER
YOUR PARTNER FOR SHOTGUN PARTS

About Us

Your **Partner**
for
Shotgun
Parts

Wencester Weapon Defense Industry Co. Ltd. A Global Leader in Quality and Reliability for Shotgun Components



Wencester Weapon Defense Industry Co. Ltd. has set the global standard for quality and reliability in the production of shotgun components. Since our inception, we have been dedicated to providing durable, precise, and high-performance products to our customers.

Located in the village of Üzümlü in the Beyşehir district of Konya - a region renowned for its century-long legacy in hunting rifle production - our story began in 2002 when Yusuf Gödüş founded a small family business rooted in this rich tradition and ancestral expertise.

In 2012, the company took a major step forward by integrating CNC machinery into its operations, paving the way for international manufacturing and expansion under its own brand.

By 2016, we established a plastic and metal injection mold workshop, further enhancing our production capabilities. Under the guidance of skilled engineers, we began producing our own molds and providing private-label manufacturing for renowned brands worldwide. Today, we manufacture thousands of rifle components for dozens of firearm brands.

In 2025, we embarked on ambitious new projects to produce rifled pistols, as well as AK-47 and AR-15 rifles. With state-of-the-art firearm and hunting rifle

production lines, we are now fully equipped to support your brand's needs.

Serving numerous brands globally, we meet even the most demanding industry requirements with our extensive and modern machinery park. Our cutting-edge equipment and streamlined production processes enable us to manufacture products with exceptional precision and adherence to the highest standards. This reflects our unwavering commitment to quality and customer satisfaction.

Our products deliver the accuracy and durability essential for hunting and shooting sports while fully complying with international standards, making us a trusted partner in the global market.

With a team of experienced professionals and continuously evolving production technologies, we remain at the forefront of industry innovation. Our steadfast focus on quality, reliability, and customer satisfaction has established **Wencester Weapon Defense Industry Co. Ltd. as a leading name in the sector.**





AR-15-001



AR-15-002



AR-15-003



AR-15-013



AR-15-014



AR-15-015



AR-15-004



AR-15-005



AR-15-006



AR-15-016



AR-15-017



AR-15-007



AR-15-008



AR-15-009



AR-15-010



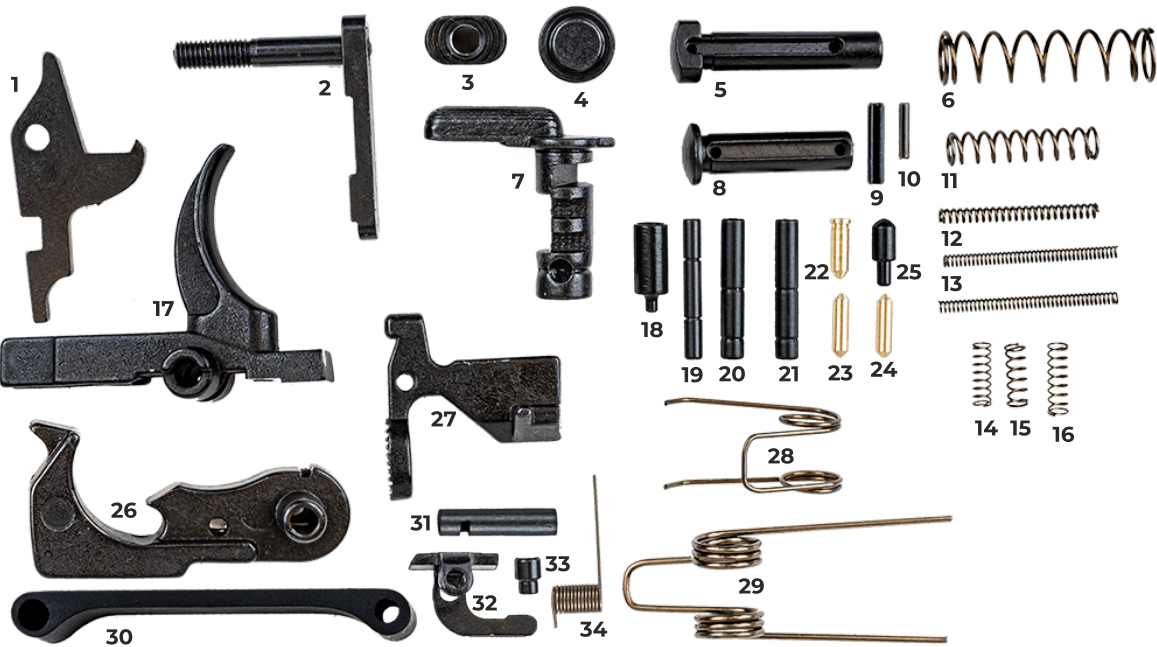
AR-15-011



AR-15-012

Our cutting-edge equipment and production processes ensure that every product is crafted with utmost precision and to the highest standards.





WE-0001



WE-0002



WE-0003



WE-0004



WE-0005



WE-0006



WE-0007



WE-0008



WE-0009



WE-0010



WE-0011



WE-0012



WE-0013



WE-0014



WE-0015



WE-0025



WE-0026



WE-0027



WE-0016



WE-0017



WE-0018



WE-0028



WE-0029



WE-0030



WE-0019



WE-0020



WE-0021



WE-0031



WE-0032



WE-0033



WE-0022



WE-0023



WE-0024



WE-0034



WE-0035



WE-0036



WE-0037



WE-0038



WE-0039



WE-0049



WE-0050



WE-0051



WE-0040



WE-0041



WE-0042



WE-0052



WE-0053



WE-0054



WE-0043



WE-0044



WE-0045



WE-0055



WE-0056



WE-0057



WE-0046



WE-0047



WE-0048



WE-0058



WE-0059



WE-0060



WE-0061



WE-0062



WE-0063



WE-0073



WE-0074



WE-0075



WE-0064



WE-0065



WE-0066



WE-0076



WE-0067



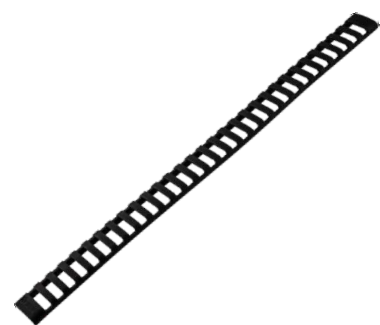
WE-0068



WE-0069



WE-0070



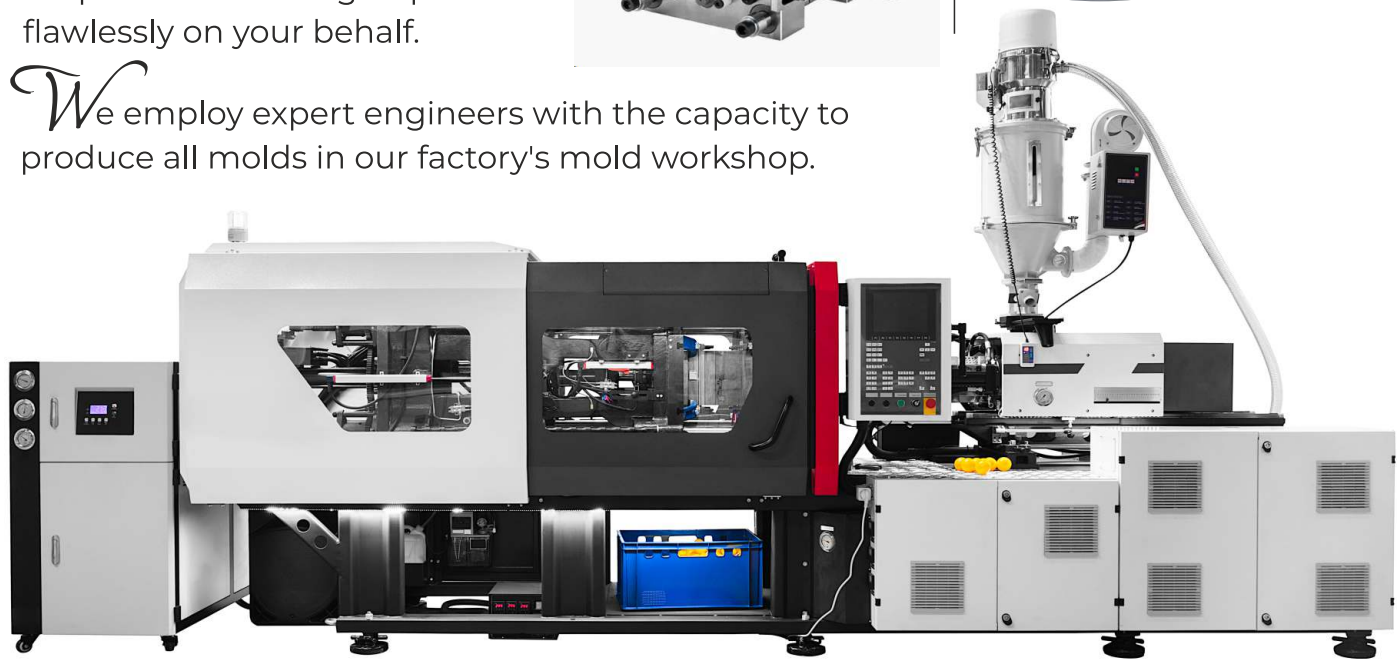
WE-0071



WE-0072

With our plastic injection and metal injection machines, we produce your brand or brands of special rifles and gun parts flawlessly on your behalf.

We employ expert engineers with the capacity to produce all molds in our factory's mold workshop.





WE-0077



WE-0078



WE-0079



WE-0089



WE-0090



WE-0091



WE-0080



WE-0081



WE-0082



WE-0092



WE-0093



WE-0094



WE-0083



WE-0084



WE-0085



WE-0095



WE-0096



WE-007



WE-0086



WE-0087



WE-0088



WE-0098



WE-0099



WE-0100



WE-0101



WE-0102



WE-0103



WE-0113



WE-0114



WE-0115



WE-0104



WE-0105



WE-0106



WE-0116



WE-0117



WE-0118



WE-0107



WE-0108



WE-0109



WE-0119



WE-0120



WE-0121



WE-0110



WE-0111



WE-0112



WE-0122



WE-0123



WE-0124



WE-0125



WE-0126



WE-0127



WE-0137



WE-0138



WE-0139



WE-0128



WE-0129



WE-0130



WE-0140



WE-0141



WE-0142



WE-0131



WE-0132



WE-0133



WE-0134



WE-0135



WE-0136





WE-0144



WE-0145



WE-0146



WE-0147



WE-0148



WE-0149



WE-0150



WE-0151



WE-0152



WE-0153



WE-0154



WE-0155



WE-0156





WE-0157



WE-0158



WE-0159



WE-0169



WE-0170



WE-0171



WE-0160



WE-0161



WE-0162



WE-0172



WE-0173



WE-0174



WE-0163



WE-0164



WE-0165



WE-0175



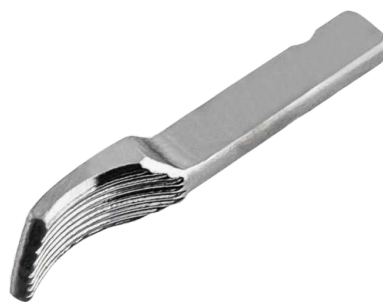
WE-0176



WE-0177



WE-0166



WE-0167



WE-0168



WE-0178



WE-0179



WE-0180



WE-0181



WE-0182



WE-0183



WE-0184



WE-0185



WE-0186



WE-0187



WE-0188



WE-0189



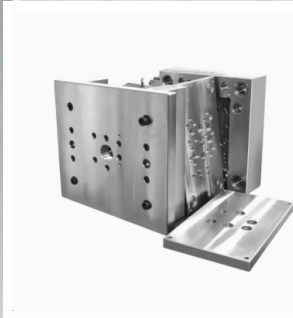
WE-0190



WE-0191



WE-0192





WE-0193



WE-0194



WE-0195



WE-0205



WE-0206



WE-0207



WE-0196



WE-0197



WE-0198



WE-0208



WE-0209



WE-0210



WE-0199



WE-0200



WE-0201



WE-0211



WE-0212



WE-0213



WE-0202



WE-0203



WE-0204



WE-0214



WE-0215



WE-0216



WE-0217



WE-0218



WE-0219



WE-0220



WE-0221



WE-0222



WE-0223



WE-0224



WE-0225



WE-0226



WE-0227



WE-0228



WE-0229



WE-0230



WE-0231



WE-0232



WE-0233



WE-0234



WE-0235



WE-0236



WE-0237



WE-0238



WE-0239



WE-0240



WE-0241



WE-0242



WE-0243



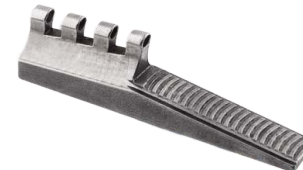
WE-0244



WE-0245



WE-0246



WE-0247



WE-0248



WE-0249



WE-0250



WE-0251



WE-0252



WE-0253



WE-0254



WE-0255



WE-0256



WE-0257



WE-0258



WE-0259



WE-0260



WE-0261



WE-0262



WE-0263



WE-0264



WE-0265

